

Autism Anglia is a registered charity which provides education, care and support to people with autism, and their families.

Our services include a Specialist School and Further Education Department, Adult Residential Homes, an Adult Day Centre, Community Support Housing and Family Support.

If you would like any information on the services we provide or would like to become a member of Autism Anglia (£25 for life membership)

please contact us on **01206 577678**
or email **info@autism-anglia.org.uk**

We have also produced a number of leaflets that you may find of interest.

- Information for Teachers & School Workers
- Guidelines for the Police
- Guidelines for Health Professionals

Please contact us for a free copy

This leaflet has been funded by Bedfordshire Police & Cambridgeshire and Hertfordshire Constabularies.

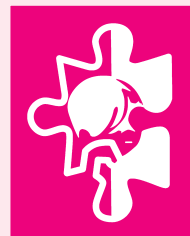


Autism Anglia (formerly The Essex Autistic Society & NACHA) is very proud to have produced an **West Anglia Autism Alert Card** in conjunction with **Bedfordshire Police & Cambridgeshire and Hertfordshire Constabularies**.

If you or a person you know has been diagnosed as having an autism spectrum condition you can apply for the FREE alert card.

The card will alert the police and emergency services that the person carrying the card has a condition that may require special attention.

See inside for how to apply.



Autism Anglia

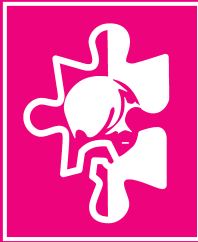
Head Office (Registered Office)
Century House, Riverside Office Centre,
North Station Road, Colchester, Essex CO1 1RE

Tel: 01206 577678
Fax: 01206 578581
Email: info@autism-anglia.org.uk

Registered Charity No. 1063717
A Company limited by guarantee no. 3407778 registered in England & Wales

Autism Anglia

Formerly The Essex Autistic Society & NACHA



Registered Charity No: 1063717

West Anglia Autism Alert Card

Produced in conjunction with
Bedfordshire Police & Cambridgeshire
and Hertfordshire Constabularies



ATTENTION!

POLICE / EMERGENCY SERVICES

I have an Autism Spectrum Condition
turn over for more information

How to apply for your
FREE alert card

www.autism-anglia.org.uk

Do you or a person you know have an autism spectrum condition?

If so, you may have already been in a position where you have had to explain the nature of autism and its associated behaviours.

Our credit card sized **west anglia autism alert card** can be carried at all times and can be displayed if you find yourself in a situation where you cannot easily give an explanation about the condition.

It will also assist the police and emergency services to identify that they are dealing with someone who has autism.

The card will carry Autism Anglia's logo as well as the Bedfordshire Police & Cambridgeshire and Hertfordshire Constabularies crests so they will be easily identifiable to the emergency services.



We are delighted that we can offer this card free of charge and help raise awareness of autism amongst the public and emergency services.

The cards also give some simple advice, the cardholder's name and space for two emergency contact details.

I have an Autism Spectrum Condition

This means:

- I have social communication difficulties.
- I am likely to be extremely anxious in unfamiliar situations.
- My behaviour may appear strange or threatening.
- I will need the support of an appropriate adult / intermediary.

My name is _____ Card No. _____

Contact _____ Tel _____

Contact _____ Tel _____

"We use the card when we go out on trips, it has improved our confidence as parents to go out and about more frequently"

In addition to the card, Autism Anglia is providing information, advice and training to the Police and other emergency services, to give them a better understanding of autism. The information we provide is informative and gives practical advice for realistic situations.

"100% of people already issued with a card said that they would recommend it to others"

June 2008

If you or someone you know would like a card you can request an application form by....

Calling Autism Anglia on: **01206 577678**

Emailing your request to: **familysupport@autism-anglia.org.uk**

Visiting **www.autism-anglia.org.uk** to download an application form.

Your card will then be sent to you as soon as possible. Please note that we do require proof of diagnosis before we can issue a card.

Proof includes:

- Diagnosis Letter
- Statement of Special Educational Needs
- Letter from a professional eg. Doctor / Social Worker
- Medical Report or Assessment

Although the cards are free, there is a £1.00 fee for any replacement cards.

Our Family Support Team can also offer information, support and guidance to families, individuals, carers and professionals on a range of autism related issues.

