

# Please send me a free information pack

For more information on remembering Autism Anglia in your will or making a donation in memory of a loved one, please complete this form and return it to us at the address overleaf.

Name: .....

Address: .....

.....

.....

.....

Tel no: .....

Email: .....

Comments: .....

.....

.....

.....

.....

.....

If you would like to speak to someone at the Charity about making a will please call 01206 577678 or email [info@autism-anglia.org.uk](mailto:info@autism-anglia.org.uk).

Any information you give us will be treated as confidential and non-binding.

## How your gift could help Autism Anglia to continue its important work

Below are just a few ways in which your legacy could help us to continue supporting children and adults with autism.

- Provide equipment for improved education and play at Doucecroft School
- Increase the number of residential homes to allow us to care for even more adults with autism
- Provide materials for lessons at the Jigsaw study centre
- Enable our Family Support Services to continue to work with families across Essex, Suffolk and Norfolk
- Allow the students at our Further Education department to go on an educational residential trip

## Autism Anglia

Head Office (Registered Office)  
Century House, Riverside Office Centre,  
North Station Road, Colchester, Essex CO1 1RE

Tel: 01206 577678

Fax: 01206 578581

Email: [info@autism-anglia.org.uk](mailto:info@autism-anglia.org.uk)

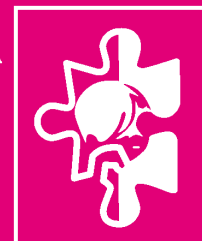
[www.autism-anglia.org.uk](http://www.autism-anglia.org.uk)

Registered Charity No. 1063717

Autism Anglia is a company limited by guarantee registered in England No. 3407778

# Autism Anglia

Formerly The Essex Autistic Society,  
Norfolk Autistic Society & NACHA.



Registered Charity No: 1063717



Help Autism Anglia  
by remembering  
us in your  
will...

*Providing education and care for  
children and adults with autism*

[www.autism-anglia.org.uk](http://www.autism-anglia.org.uk)

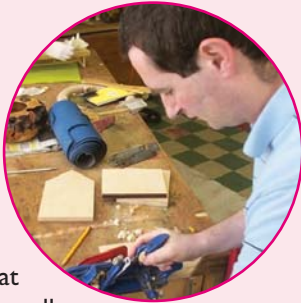
**You can help us to expand and improve our services  
which will help even more people with autism.**

**Want to find out more?**

## What is Autism?

Autism is a lifelong condition which affects the way a person communicates and relates to other people. People with Autism Spectrum Conditions (ASC) have difficulty with everyday social interaction and can find it hard to make sense of the world around them.

Autism affects people in many different ways and the autistic spectrum ranges from low to high functioning autism and Asperger Syndrome. In diagnosis it is recognised that there are three areas where all people with autism have difficulties, irrespective of the degree of its effects, namely difficulties with **Social Interaction, Communication (verbal and non-verbal) and Imagination.**



Although there is no effective cure for autism, it has been found that early intervention and individualised specialist support can really assist people with autism achieve their full potential and lead a fulfilling life within the community.

**It is estimated that 1% of the population in the UK is affected by autism; that is nearly 600,000 in the whole of the country and 28,000 people in Essex, Suffolk and Norfolk.**

Autism Anglia offers a wide range of autism specific services.

### School Services

**Doucecroft School and Further Education Department:** Provides day and weekly boarding places to children and young adults aged 3-19 years of age.

### Adult Services

**Adult Residential Care:** Houses in Essex and Norfolk offer permanent accommodation to adults with ASC, with one specifically providing for adults with Asperger Syndrome.

**Day Centre:** The Jigsaw Study Centre provides structured day activities including art, woodcraft, PE and life-skills.

**Community Support:** We can provide packages of care to adults living more independently in their own homes.

### Family Support

Our Family Support Team offers support and advice to families who face the difficulty of caring for an individual with autism, and work with professionals to increase understanding. An Autism Alert Card is available free of charge which identifies that the holder has an autism spectrum condition.

### Clinical Psychology / Speech & Language

Our own specialists work closely with staff to assess the needs of service users and implement strategies for improved communication and well-being.

### Training / Information

Our knowledgeable staff can give presentations, provide training and supply information on all matters relating to the care and needs of people with autism.

To continue providing these vital services across East Anglia we greatly depend on the generosity of people who remember Autism Anglia in their will.

*Leaving a gift to Autism Anglia will not only help a good cause, it may also help reduce your Inheritance Tax liability.*

- I would like more information on Autism Anglia and the work it does with children and adults with autism.
- I am thinking about leaving a gift to the Charity in my will.

By remembering Autism Anglia in your will, however large or small your donation, you will help us to continue providing specialist care for children with autism and to be able to carry on providing for them into their adult lives.

*Please help us  
to continue  
supporting people  
with autism.*



**To receive your FREE information pack containing advice and information on preparing or updating your will, simply complete the form overleaf and return to the following address:**

**Autism Anglia  
Century House  
Riverside Office Centre  
North Station Road  
Colchester, Essex  
CO1 1RE**

