

You can make a difference

You can help Autism Anglia in many ways.

A **donation**, however large or small, could help us to:

- Provide books, toys and computers for the children at Doucecroft School.
- Arrange an annual residential trip away for the young adults at the Further Education Department.
- Buy materials and equipment for the adults at the Jigsaw Study Centre.
- Continue providing a FREE Family Support service to families affected by autism.
- Expand our adult residential capacity to care for more children once they leave school.
- Increase knowledge and understanding of autism.



Your **time** could help us to:

- Organise fundraising activities and collections to raise vital funds and awareness of Autism Anglia.
- Spread the word about autism and our work by giving talks to groups and schools.
- Offer support or expertise to the service users in a voluntary capacity.

Please call us on 01206 577678 if you think you could help Autism Anglia in any way.



Autism Anglia

Head Office (Registered Office)
Century House, Riverside Office Centre,
North Station Road, Colchester, Essex CO1 1RE

Tel: 01206 577678

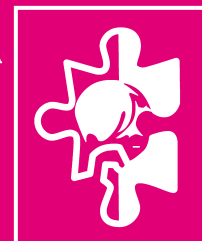
Fax: 01206 578581

Email: info@autism-anglia.org.uk

Registered Charity No. 1063717
A Company limited by guarantee no. 3407778 registered in England & Wales

Autism Anglia

Formerly The Essex Autistic Society,
Norfolk Autistic Society & NACHA.



Registered Charity No: 1063717



Providing Education, Care and Support for People with Autism

www.autism-anglia.org.uk

What is autism?

Autism is a lifelong condition which affects the way a person communicates and relates to other people.

People with Autism Spectrum Conditions (ASC) have difficulty with everyday social interaction and can find it hard to make sense of the world around them.

Autism affects people in many different ways and the autistic spectrum ranges from low to high functioning autism and Asperger Syndrome. In diagnosis it is recognised that there are three areas where all people with autism have difficulties, irrespective of the degree of its effects, namely difficulties with **Social Interaction, Communication** (verbal and non-verbal) and **Imagination**.

It is estimated that in the UK autism, in all its forms, affects nearly one in 100 people.

This means about 600,000 in the whole of the country and almost **28,000 in Essex, Suffolk and Norfolk** (figures from the National Autistic Society)

About Autism Anglia

Autism Anglia was formed following the merger of The Essex Autistic Society, Norfolk Autistic Society and the Norfolk Autistic Community Housing Association (NACHA) in 2008.

The charity is dedicated to promoting the welfare, education and care of children and adults with autism, whilst also supporting the many families affected by autism.

We have over 30 years experience in providing a range of services aimed at enabling people with autism to live as independently as possible and to experience choice and inclusion in society.

We receive no financial support from The National Autistic Society and therefore rely on fundraising to help us establish, up keep and expand our services.

How we are helping

Although there is no effective cure for autism, it has been found that early intervention and individualised specialist support can really assist people with autism achieve their full potential and lead a fulfilling life within the community.

Autism Anglia therefore offers a wide range of autism specific services.

School Services

Doucecroft School and Further Education Department: Provides day and weekly boarding places to children and young adults aged 3-19 years of age.

Adult Services

Adult Residential Care: Houses in Essex and Norfolk offer permanent accommodation to adults with ASC, with one specifically providing for adults with Asperger Syndrome.

Day Centre: The Jigsaw Study Centre provides structured day activities including art, woodcraft, PE and life-skills.

Community Support: We can provide packages of care to adults living more independently in their own homes.

Family Support

Our Family Support Team offers support and advice to families who face the difficulty of caring for an individual with autism, and work with professionals to increase understanding. An Autism Alert Card is available free of charge which identifies that the holder has an autism spectrum condition.

Clinical Psychology / Speech & Language

Our own specialists work closely with staff to assess the needs of service users and implement strategies for improved communication and well-being.

Training / Information

Our knowledgeable staff can give presentations, provide training and supply information on all matters relating to the care and needs of people with autism.

How you can help

Your support will help us to continue providing specialist services to people with autism. If you would like to make a donation, receive further information or support us in any way, please complete the form below.

Name:.....

Address:.....

Postcode:..... Tel:.....

Email:.....

Please choose from the following options

1. I wish to make a donation of £.....*

2. I wish to set up a monthly donation of

£5 £10 £15 Other £.....*

please contact me to make the necessary arrangements.

3. I would like to become a life member of Autism Anglia and enclose a cheque for £25 *

*We can claim a further 28% on donations and membership from the Inland Revenue if you complete this section.

I would like this donation and any future donations I may make to Autism Anglia to be treated as a Gift Aid donation. I confirm that all such donations will be paid from monies which have suffered either Income Tax or Capital Gains Tax.

Please tick here

giftaid it

4. Please send me further information on:

Helping to fundraise for Autism Anglia

Leaving a gift to the charity in my Will

Obtaining a FREE Autism Alert Card

Other:.....

Cheques should be made payable to Autism Anglia. Please return this form with your donation to the Head Office address on the back of this leaflet.

By giving us your information, you agree to us sending you news and information concerning Autism Anglia from time to time. We do not pass personal information on to third party companies.

