

Annual Report & Financial Statements

for the year ended

31st August 2008

Contents

Legal and Administration	2
Chairman's Statement	3
Chief Executive's Report	5
Review of Current Services	7
Future Plans	11
Directors' Report	12
Report of the Auditors	15
Statement of Financial Activities	16
Total Recognised Gains and Losses	17
Balance Sheet	18
Cash Flow Statement	19
Accounting Policies	20
Notes to the Accounts	21-26
Five-Year Financial Summary	27
Thanks and Acknowledgements	28

Autism Anglia

Registered Company No: 3407778

Registered Charity No: 1063717

Patrons:

The Rt. Hon. Lord Rayleigh
The Hon. Bernard Jenkin MP
The Rt. Revd Christopher Morgan, Bishop of Colchester
The Rt. Revd Graham James, Bishop of Norwich

Vice Presidents:

Mr John Seymour
Professor Simon Baron-Cohen

Directors:

Mr John L Sparkes FCA – Chairman and Treasurer
Mr Andrew CE Beavers
Mrs Anne-Marie Groves
Mrs Gill Norton
Mr Steve Pittuck
Mr Andrew Stevenson
Mrs Sandra Sheldon

**Chief Executive /
Company Secretary:**

Mr Clive A Stobbs

**Doucecroft School Services
Head Teacher:**

Ms Kathy Cranmer

Director of Adult Services:

Mr Ian Brown

**Director of Finance
& Administration:**

Mrs Vivienne A Gibbons

Registered Office:

Century House
Riverside Office Centre
North Station Road
Colchester, Essex CO1 1RE

Bankers:

The Royal Bank of Scotland plc
45 Head Street
Colchester, Essex CO1 1NW

Auditors:

Whittle & Co
Century House South
North Station Road
Colchester, Essex CO1 1RE

Solicitors:

Goody Burrett LLP
St. Martins House
63 West Stockwell Street
Colchester, Essex CO1 1HE

LEGAL AND ADMINISTRATION INFORMATION

Autism Anglia, formerly The Essex Autistic Society, first registered as a Charity in 1974, was incorporated as a company limited by guarantee in 1997 and is registered in England & Wales under No. 3407778 and as a Charity under No. 1063717.

On 29th February 2008 Norfolk Autistic Community Housing Association Limited (an organisation registered under the Industrial and Provident Societies Act 1965 with number IP23531R) and on 29th August 2008 the Norfolk Autistic Society (a company limited by guarantee, registered number 4206326 and as a Charity under No. 1089382) were merged into Autism Anglia.

The Charity is established for the public benefit for the education, treatment, welfare and care of people with autism and related conditions.

Statement of Principles of the Charity

The underlying principles upon which Anglia Autism bases its services are: -

- To promote the welfare of children and adults with Autistic Spectrum Conditions.
- To supplement existing provision of the educational, health and social services in co-operation with local authorities, health authorities and voluntary organisations.
- To provide facilities for education, integration, care and guidance in a constructive environment and to set up educational, training and residential establishments for such purposes.
- To provide help and guidance for parents and families of children and young people with ASC.
- To promote a greater knowledge and understanding of autism amongst the public.

Organisational Structure

On the 31st August 2008 there were 187 Members (2007: 191) on the Register of Members of the Company, all of whom are entitled to vote. The members elect the charitable trustees (the Board of Directors under Company Law) of up to twelve members (of whom not more than one half shall not be parent members), who hold office for a term of three years but who may stand for re-election. The trustees elect from their number a Chairman who shall not be a parent member.

The trustees also appoint the Chief Executive/Company Secretary, who is accountable to the trustees for the day-to-day management of the Charity, implementing strategic policy and plans approved by the trustees. He is salaried and not a trustee. They also nominate one from their number to be responsible for finance and another for health and safety. The details of the trustees, Chief Executive/Company Secretary are shown on Page 1.

The Rt. Hon. Lord Rayleigh, The Hon. Bernard Jenkin MP, The Rt. Revd Christopher Morgan, The Bishop of Colchester and The Rt. Revd Graham James, The Bishop of Norwich are Patrons. Mr John Seymour and Professor Simon Baron-Cohen are Vice Presidents.

CHAIRMAN'S STATEMENT



Once again I am pleased to report another very successful year for the Charity, not only in increasing our services but also the successful merger with two other autism service providers. The year 2008 has seen a dramatic change, in that hitherto we had been principally an Essex based Charity. With the merger of both Norfolk Autistic Community Housing Association Limited (NACHA) and the Norfolk Autistic Society (NAS), we have now become a significant Charity providing School and Adult Services throughout Essex and Adult Services in Norfolk.

This was a tremendous step forward and one which the trustees could not have undertaken without the foundation of a professional team and a sound reporting system, which has been in place for a number of years. I am grateful to both Hugh Lanham and Dr Tony Wright, the respective chairmen of NACHA and NAS, for their input in ensuring that the mergers were completed within the three month timescales that had been set. The merger of the three organisations will enable the Charity to further increase its services to children and adults with autism and related conditions, and their families.

Following the merger we changed our name from The Essex Autistic Society to Autism Anglia and we welcomed Andrew Stevenson who had been a Trustee of NACHA and Sandra Sheldon who had been a Trustee of both NACHA and NAS to the Board.

I am delighted to report that The Rt. Revd Graham James, Bishop of Norwich, who had been a Patron of the Norfolk Autistic Society has kindly agreed to become a Patron of Autism Anglia.

I am also delighted to be able to report that Professor Simon Baron-Cohen has agreed to become a Vice President. Simon has published many books, received numerous awards and is one of the world's leading authorities on autism. We are very proud that such a leading figure in the field of autism should want to be associated with us.

Our Alert Card that was successfully launched in Essex and Suffolk eighteen months ago has now been extended into Norfolk. This is important as it greatly assists in raising awareness of autism.

The number of children at our new Doucecroft School is slowly increasing and it is encouraging to note that we have reached the stage where we are now able to fully recover our ongoing costs. However numbers are below what had been expected and we still have vacancies for both day and weekly boarding pupils. This is due to the fact that the pupils, as a general rule, are not being referred to us until they reach eleven years of age. There is a strong case for early intervention as working with children can stop or significantly reduce behavioural problems before they become entrenched.

The trustees continue to give a great deal of thought on plans to build on the Charity's strengths. We are currently increasing the provision of our Essex based Adult Services, in both residential care and Community Support. At the same time the Norfolk Services have to be fully integrated within the organisation, following which, we intend to increase those services.

We have now commenced building a specialised unit for three adults at our Peldon Campus, which should be ready for occupation in December 2009. The house will be named John Jones House in memory of John's long association with the Charity.

We are very grateful for the continued support of a number of charitable trusts and foundations, other bodies and individuals, who have helped through giving cash donations or by supporting fundraising events.

Fundraising continues to play an important part in our plans to raise the necessary funds to increase our services.

It is with great sadness to record the death of Anthony Peel who joined our Board of Trustees in 2005 and passed away in June 2008. During those three years Anthony, with his wide experience, ensured that he was a valuable member of the board and will be greatly missed.

Mr C N Andrews resigned from the board on 18th February and I would like to thank him for his contribution since he rejoined the board on 1st June 2005.

CHAIRMAN'S STATEMENT (cont.)

Autism Anglia fully supports **World Autism Awareness Day on 2nd April 2009**, which I am sure will become an important day in the calendar each year.

Finally, I would like to congratulate all of our staff whose skill and dedication has been recognised by the very good reports we have received during the year for our Adult Services and School Services after inspections by the Commission for Social Care Inspection, OFSTED and after successful reviews by the National Autism Accreditation Programme. I believe this to be an outstanding achievement for the Charity which is due solely to our staff and recognises the excellent care our service users and pupils receive.

I am delighted to be able to report that following their recent inspection OFSTED has identified Doucecroft School as being an 'Outstanding Residential Special School'.

It may appear that we take the high quality of service provided by our staff to our pupils and service users for granted but on behalf of the Board of Trustees; I would like to thank every member of staff for their hard work and loyalty.

J. L. Sparkes,
Chairman

18th February 2009

CHIEF EXECUTIVE'S REPORT



Every year since becoming Chief Executive in 2002 I have started my report by saying how busy the last year has been. Well this year is no different, and may in fact have been the busiest and the most exciting since the Charity was established.

The most significant events in 2008 were that we took over the running of the Norfolk Autistic Society (NAS) and the Norfolk Autistic Community Housing Association (NACHA). We also decided to change our name to Autism Anglia to reflect our new enlarged area of operation. NAS was established in 1970 by parents who found there was little or no support in their area. NAS offered assistance, advice, had set up a holiday respite scheme, parents training, support groups and a Family Support team. In 1982 NAS established NACHA to provide adult residential services. NACHA opened their first residential home in Dereham, their second in Bowthorpe on the outskirts of Norwich and their third in Dereham. We are currently caring for 25 adults in our residential homes in Norfolk.

In Essex Doucecroft School Services have continued to expand. At the end of the academic year (July 2008) we had 50 students at Eight Ash Green and Kelvedon. Despite seven of these leaving during the summer, by half term (October 2008) the total number had risen to 52. Of these 24 are FE aged students, which demonstrates the changing pattern of referrals.

The Adult Services have also continued to expand. Our Community Support team have opened five houses provided in collaboration with Colne Housing Society. We now have the capacity to provide care and support to sixteen adults living in their own homes. With three houses in Norfolk our Adult Services now run eight residential homes caring for 52 adults. We have moved the adult administration out of the old cottage at Peldon and a new house is being built on the site for three complex needs adults and we expect it to open by December 2009. The Trustees have agreed that this new house will be called John Jones House to respect the years of dedicated service that John gave to the Charity.

Jigsaw Study Centre with 54 adult students is bursting at the seams and we are still searching for a suitable building to open an additional Jigsaw. We also run a small adult Day Centre in Dereham, Norfolk.

Additional funding has allowed us to expand our Family Support team in Essex to a team of four. We also have a Family Support team of two based in Norfolk. They all provide information, advice, and valuable support to people with autism and their families throughout the region. The total number of families they have supported since the services started is over 1,200. Our Family Support team also runs the Autism Alert Card scheme which goes from strength to strength. In October 2008, following a launch in Norwich, the scheme was extended into Norfolk and over 500 cards have now been issued free of charge, with 1,000 information packs supplied to health professional, schools etc. In addition to our card which covers Essex, Suffolk and Norfolk we have assisted similar schemes to be set up in Kent and Hampshire and are currently in discussion with Cambridgeshire, Bedfordshire and Hertfordshire police forces, with a view to expanding our scheme into those counties.

Our Clinical Psychology and Speech & Language Therapy teams are also providing valuable support to service users, their families and our staff. Both of these services are working in partnership with Essex University. In addition our Specialist Clinical Psychologist is also leading a project with Cambridge University and has been awarded an honorary research fellowship by them. We are very proud to have been invited to work with both universities in this way and it is a sign of the reputation and the high regard in which the Charity is held.

CHIEF EXECUTIVE'S REPORT (cont.)

This high standing and regard in the community has also been reflected by the winning of many awards during the year. We have won two High Sheriffs of Essex Awards 'In recognition of valuable service to community safety in the County. This award also recognises the appreciation of the people of Essex for this contribution in enhancing the life of the community'; the Newsquest Group 'Essex Countywide Business Community Award 2008'; the Essex Chronicle Media Group 'Best Business in the Community Award 2008'; and the Essex County Council Millennium Fund Award 2008 'In recognition of the commitment and dedication to improve the lives of people in their community.'



Essex Business Awards 2008

Our fundraising team have had another successful year. The funds they have raised this year have helped the costs of: the Clinical Psychology team, expanding the Family Support team, new minibuses, sporting equipment, computers and IT equipment for the School and Community Support houses. We are still raising money to equip John Jones House and at the FE Department, Kelvedon for an interactive whiteboard, the residential trip and to convert more of the outbuilding to provide a new training kitchen.

Finally I'd like to echo our Chairman's thanks to all of our staff. Without your dedication, loyalty and care we couldn't continue providing the high quality of service that we do. Your professionalism and skill has been consistently recognised during the year by reviews from outside agencies and by the awards we have received. I thank you on behalf of those in our care.

C A Stobbs,
Chief Executive

18th February 2009

REVIEW OF CURRENT SERVICES

Adult Services

The Adult Service continues to expand. The Charity now runs eight adult residential establishments supporting 52 adults: three houses in Peldon Campus can support eighteen residents and a further two houses in Colchester support another nine residents. Two houses in Dereham can provide care to fifteen adults and the house at Bowthorpe ten. Our Community Support Service also continues to expand and now has the capacity to support sixteen adults living in their own homes.

Peldon Old Rectory is a three storey Victorian building and offers accommodation for eleven adults. All service users have their own private bedrooms and the house is set within large developed gardens which are used for leisure, recreation and gardening. The gardens contain greenhouses, a swimming pool, a workshop, fruit, vegetables and flowers.



Peldon Old Rectory

Ashton House is a detached residence with a large garden on Peldon Campus which provides accommodation for three adults. Each resident has their own bedroom. Due to the assessed complex needs of these service users staffing levels within Ashton House are higher than at the other adult establishments.

Seymour House is also on Peldon Campus and is a detached property, again with a large garden. It provides accommodation for four services users. Each resident has their own bedroom.

Coldwell Villa is a large detached house in Mersea Road, Colchester, which provides accommodation for five service users who have been diagnosed as having Asperger Syndrome. The staff are experienced in working with this particular service group and the presenting difficulties. Each resident has their own bedroom.

Bourne House is a four bed detached house in Mersea Road, Colchester. Each resident has their own bedroom. All service users are encouraged to lead a more independent lifestyle.



Bourne House

Whitstone House is a three storey Victorian house in Dereham which offers accommodation for eleven adults. All service users have their own private bedrooms and the house is set within an enclosed established garden which is used for leisure and recreation. The garden contains a swimming pool, a craft workshop and;

Walnut House, a modern four bed detached house. Each resident has their own bedroom.

Lambert House is a large purpose built residential home in Bowthorpe, Norwich which provides accommodation for ten adults. Each resident has their own bedroom. The house is constructed around a paved courtyard, has its own garden and an indoor heated swimming pool.



Lambert House

REVIEW OF CURRENT SERVICES (cont.)

Community Support

The Charity has recently expanded into providing care through Community Support projects and we now have the capacity to provide support to sixteen adults. The collaboration with Colne Housing Society has already provided five houses for fourteen adults.

Jigsaw Study Centre

The Charity also runs Jigsaw Study Centre in Colchester which provides structured day activities for up to 54 adults with a mixture of service users from our own establishments and from the wider community. The centre offers skill-based activities which include art & textiles, music, computing, woodwork, PE and life-skills.



Jigsaw gym

Old Chapel

We run a small Day Centre in the Old Chapel, Dereham offering similar activities to Jigsaw. We also have an allotment in Dereham where the instructor and residents grow a variety of flowers, vegetables and fruit. The instructor and residents have used flowers from the allotments to produce 'Courtyard Gardens' that have won gold medals and 'Second in Show' at 2007 and 2008 Royal Norfolk Shows.

Doucecroft School Services

As at the end of the academic year in July 2008 there were 50 students within the Doucecroft School Services. Despite seven leaving in July, by October 2008 half-term the number has increased to 52.

Doucecroft School, Eight Ash Green

Doucecroft School has continued to thrive since its relocation to Eight Ash Green in 2005. The four and half acre site is a calm, spacious environment which is already proving beneficial to the children and receives favourable reports from friends, parents and professionals. Specialist facilities at the school include two sensory rooms, a design and technology room, music/therapy and life-skills classrooms, as well as four purpose built boarding houses.

Further Education Provision

The Doucecroft School Services offer post 16 education on a separate site in Kelvedon and within the school site at Eight Ash Green. The individual nature, locations and characters of the two establishments facilitate different opportunities for students in terms of the on-site facilities, the curriculum, the age range of students and access to the community and transport links.



Play area Doucecroft School

REVIEW OF CURRENT SERVICES (cont.)

Doucecroft Further Education Department, Kelvedon

The Further Education Department in Kelvedon is a large house in the village centre which has places for up to 15 students on a day or weekly boarding basis. The curriculum offered at the FE Department is designed specifically to address the acquisition of independent living skills. Students can access community facilities such as public transport, shops, sport and leisure venues etc.

Head Office

The Head Office is the administration centre of the Charity. In addition to general administration staff the following specialists are based there:

Finance department headed up by the Director of Finance and Administration

Adult Services administration team headed up by the Director of Adult Services

Clinical Psychology team *(who are working in partnership with Essex University, and are led by our Specialist Clinical Psychologist who has recently been awarded an honorary research fellowship from Cambridge University)*

Family Support team

Speech & Language Therapy team *(who are also working in partnership with Essex University)*

Community Support Management team

Fundraising team

Health & Safety and Training Officer

IT Manager

Human Resources Officer (from January 2009)

Dereham Office

Administration and support for our Norfolk residential adult homes (and Day Centre) is provided at our Old Pharmacy Yard office in Dereham.

Norwich Office

Our office in the Charing Cross Centre, Norwich co-ordinates Norfolk Family Support services and the holiday respite service.

General

Having recently taken over the running of the two organisations in Norfolk and changing our name, we are working hard to raise awareness of the work that Autism Anglia is doing across the region. In Essex, Suffolk and Norfolk we are actively co-operating with as many other organisations as possible to raise awareness and increase and improve the support and care available to people with autism and their families. An example of this is the support we gave to the National Autistic Society's successful campaign to introduce an 'Autism Bill' which aims to strengthen information about the numbers of people with autism and their needs, in order to improve local planning and commissioning of services. It aims to improve inter-agency working to secure effective transition for young people from child to Adult Services. Finally, it aims to ensure access to appropriate support and services for people with autism in adult life. In the UK over two million people's lives are touched by autism every single day and too many people with autism are excluded from receiving appropriate services.



Walnut House



Sandra Sheldon, John Sparkes, Clive Stobbs & Tony Wright signing the merger agreement between the Norfolk Autistic Society and Autism Anglia.

REVIEW OF CURRENT SERVICES (cont.)

Another example of our partnership projects is the success of our Autism Alert Card (for more details see Chief Executive's report). Very shortly we expect this scheme to cover Essex, Suffolk, Norfolk, Cambridgeshire, Bedfordshire and Hertfordshire. We are still being contacted by other police forces, autistic societies and support groups to give information, advice and help to enable similar schemes to be set up in other parts of the country. If you would like more information about the card please contact Head Office on 01206 577678 or you can download an application form from our website, www.autism-anglia.org.uk.

The success of the scheme has enabled us to develop close ties with emergency services across the region and given us the opportunity to provide training and advice to ensure people with autism are dealt with appropriately by those services.

FUTURE PLANS

Adult Services

The Adult Services will continue to expand and it is anticipated that the number of adults being cared for will increase to 71 by 31st August 2009.

Work on the redevelopment of The Cottage at Peldon to provide another three bed residential home for complex needs users is scheduled to start at the beginning of 2009 and John Jones house is expected to be open in December 2009.

The very small Day Centre in Norfolk is a concern to us because the need is greater than the provision we can offer, and we have been searching for an appropriate site to open a larger centre that will be able to provide support to more people with autism in the area. A suitable site has been identified. We are in discussions with the landlord and hope to have the new Day Centre open in late 2009.

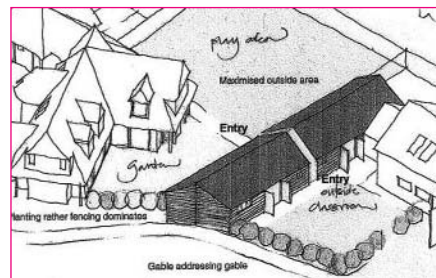


Community Support

The Charity will continue expanding care through Community Support projects. We currently have the capacity to provide support to sixteen adults in Essex which we expect will increase to nineteen by 31 August 2009. We are also in discussion with Norfolk County Council with a view to opening this type of provision in Norfolk.

Doucecroft School Services

The Doucecroft School Services will also continue to expand. It is anticipated that the number of students will continue to increase to reach 55 by 31st August 2009. We have discovered that one of the rooms we had planned to use as a classroom is too small because the average age of the students in the last few years has changed dramatically. Of the 50 students within the School Services at the end of the academic year in July 2008, 24 were aged over sixteen. The recent referrals are older, bigger and generally need a higher number of support staff than anticipated. This combined with the loss of one of the planned classrooms has forced us to accept that the real current capacity at Eight Ash Green is in the low to mid forties, which we are rapidly approaching. From early 2009 the music room will be used as a temporary classroom. A review has been carried out to consider and suggest a permanent solution and we are planning to erect a new building late in 2009 which will contain two new classrooms. These new classrooms will be between Beech House and The Barn and will house all of the post sixteen students at Eight Ash Green. The new classrooms and Beech House will be enclosed to form a separate 'Sixth Form Campus'.



To help cope with the increase in numbers at the Further Education Department in Kelvedon, funding is being sought to convert more of the outbuilding to provide a new teaching kitchen/life skills area.

Support Services

Our Family Support, Clinical Psychology and Speech & Language Therapy teams in Essex are continuing to expand to help the increasing number of people with autism being identified. Funding is being sought to expand or introduce these services into Norfolk.

DIRECTORS' REPORT

The directors have pleasure in presenting their annual report together with the financial statements of the Charity for the year ending 31st August 2008.

The Board of Trustees have adopted and comply with '**Good Governance A Code for the Voluntary and Community Sector**', which has been developed by the Charity Commission, the National Council for Voluntary Organisations (NCVO), the Association of Chief Executives of Voluntary Organisations (ACEVO), Charity Trustee Network (CTN), and the Institute of Chartered Secretaries and Administrators (ICSA).

Directors

The directors of the company (for the purposes of the Charities Acts also designated as Trustees) as at the date of this report are shown on page 1. No director has received any remuneration for his or her services or financial benefit from the Charity. The Charity bears the cost of the usual Directors' and Officers' insurance for the Board and other committee members as authorised by the Memorandum and Articles of Association. The members of the Charity in general meeting appoint the directors and in accordance with Article 32 one third of the directors retire each year by rotation. The directors retiring by rotation this year are Mrs A-M Groves and Mrs G Norton and who being eligible, offer themselves for re-appointment. Mrs S Sheldon and Mr A Stevenson were co-opted to the board on 9th April 2008 and will not be seeking appointment at the annual general meeting. Mr C N Andrews (parent member) resigned from the board on 18th February 2009.

Trustees meet formally as a body bi-monthly. All new trustees receive a comprehensive Trustees' Manual. Additionally, individual trustees may undertake specific training (internal or external) in a particular aspect of Trusteeship. Trustees are encouraged to attend all six meetings each year and the annual general meeting of members.

As the Charity cares for vulnerable children and adults, all trustees and school governors submit to Criminal Records Bureau checks on being elected.

An audit review of trustee's skills was conducted by a sub-committee which presented a report to the board on 5th April 2006. This process has ensured that the board maintains an appropriate mix of experience and expertise. Current trustees cover a wide range of experiences, including commercial business, local government, education, accountancy, nursing, social services, financial management, and of course parents of individuals with autism.

Statement of Directors' responsibilities for the financial statements

The following statement, which should be read in conjunction with the Report of the Auditors, is made with a view to identifying for members the responsibilities of the directors in respect of the financial statements.

The directors are required by law to prepare financial statements for each financial year, which give a true and fair view of the state of affairs of the company and of the results for that period. In preparing these financial statements the directors are required to:

- select suitable accounting policies and apply them consistently;
- make judgments and estimates that are reasonable and prudent;
- state whether applicable accounting standards have been followed, subject to any material departures disclosed and explained in the financial statements;
- prepare the financial statements on the going concern basis unless it is inappropriate to presume that this basis applies.

The directors confirm that they have complied with the above requirements in preparing the financial statements.

The directors are responsible for ensuring proper accounting records are kept which disclose with reasonable accuracy at any time the financial position of the company and enable them to ensure that the financial statements comply with the Companies Act 1985. They are also responsible for safeguarding the assets of the company and hence for taking reasonable steps for the prevention and detection of fraud and other irregularities.

Statement of disclosure of information to Auditors

So far as each director is aware, there is no relevant audit information of which the Company's auditors are unaware. Relevant information is defined as information needed by the Company's auditors in connection with preparing their report. Each director has taken all the steps (such as making enquiries of other directors and the auditors and any other steps required by the director's duty to exercise due care, skill and diligence) that he or she ought to have taken in his or her duty as a director in order to make himself or herself aware of any relevant information to establish that the Company's auditors are aware of that information.

DIRECTORS' REPORT (cont.)

Transfer of Norfolk Autistic Community Housing Association Limited (NACHA) and Norfolk Autistic Charity (NAS) to Autism Anglia

As at 29th February 2008 the net assets and operations of NACHA were transferred to Autism Anglia. The operations consisted of the provision of Adult Services to twenty-five service users which was a significant increase over our existing number of service users.

As at 29th August 2008 the net assets and operations of NAS were also transferred to Autism Anglia. The operations were on a much smaller scale and related primarily to respite care which is a new service to Autism Anglia.

Review of financial statements

The net incoming resources for the year amounted to £282,000, as compared to net outgoing resources of £8,000 the previous year.

The School Services activity with a small increase in the number of pupils than the previous year had a much reduced deficit of £43,000 as compared to £182,000 in the previous year.

The Adult Services activity had a further satisfactory year with a surplus of £341,000 (2007: £201,000). This service has benefited following the transfer of the operations of NACHA and a further increase in our Community Support Service.

Property Services, which relates to the properties occupied by the two services, had a surplus of £145,000 (2007: £166,000). Our Family Support team now provides support to over 1,200 families, most of the cost of which is met by grant making bodies. Financing costs of £307,000 (2007: £322,000) relating to borrowing costs associated with the new school were incurred. Income from donations, gifts and fundraising of £281,000 (2007: £390,000).

The net incoming resources for the year amounted to £282,000 which together with the net assets transferred during the year from NACHA and NAS of £955,000, resulted in an increase in funds amounting to £1,237,000 as compared to a net decrease in funds of £8,000 in the previous year.

The cash flow for the year was very satisfactory in that we were able to reduce our net debt by £672,000 from £4,800,000 to £4,128,000. The reduction was greater than had been forecast.

Reserves policy

As previously stated, in view of the level of the investment required in respect of the new Doucecroft School, the reserves policy was revised five years ago to reflect the amount invested in fixed assets and the bank facilities that have been made available to the Charity. The Directors would normally expect to have at least two months expenditure, which currently amounts to £1,400,000 in cash reserves in order to meet fluctuations in income, current liabilities and unplanned expenditure.

Unrestricted funds at 31st August 2008

	£'000
Total	4,871
Designated funds	9,112
Deficit on general reserves	4,241

The deficit on general reserves is being financed by bank loans, which are repayable in annual instalments over the next sixteen years.

In addition to the net borrowings at 31st August 2008 of £4,128,000 the Charity had undrawn bank facilities of £750,000 available. The directors consider that in the light of these facilities the Charity will have sufficient funds available to meet its ongoing obligations.

Risk management

The Board of Trustees fully recognises its responsibility for the management of risk, and there is a sub-committee of the Board of Trustees charged with identifying, assessing and minimising the major risks (based on likelihood of occurrence and potential impact) to which the Charity is exposed.

The Board of Trustees as a body has undertaken an annual review of the Risk Register and is able to confirm that the major risks to which the Charity is exposed are properly identified, reviewed and evaluated; and that appropriate systems have been established and maintained in order to mitigate those risks.

Health and Safety

The Charity has issued a policy statement on its commitment to a safe working environment for all employees and service users and has a full time Health & Safety Officer in its employment.

DIRECTORS' REPORT (cont.)

Review of performance against objectives

The objective that had been set for the year in respect of School and Adult Services and the amount receivable from voluntary income was as follows:

School Services

That the number of pupils at the Doucecroft School will increase during the year so that fees receivable would equate to charitable expenditure. In the event, pupil numbers continued to be below that which had been planned and expenditure exceeded income by £43,000.

Adult Services

That the provision of Community Support within the Adult Services would further increase and this was achieved in line with the objective that had been set. The fee income from the services exceeded charitable expenditure by £381,000 which was satisfactory.

Fundraising

It is very pleasing to report that the Fundraising team raised a further £281,000 from fundraising which was above the target that had been set.

The plan included a level of voluntary income to support the Family Support team and the provision of mini-buses for both school and Adult Services. The voluntary income received exceeded the amount included in the plan.

Three year Development Plan

The Board of Trustees have approved a Three Year Development Plan whereby the objective is to further expand both its School and Adult Services within the period of the Plan.

The Plan includes the re-development of the Cottage at Peldon Old Rectory to provide another three bed residential home for complex needs users to be opened in January 2010.

Annual General Meeting

The Annual General Meeting of the Charity will be held on Friday 3rd April 2009 at Doucecroft School, Abbots Lane, Eight Ash Green, Colchester, Essex CO6 3QL.

Auditors

Whittle & Co were appointed as auditors during the period under review. In accordance with Section 385 of the Companies Act 1985, a resolution for their re-appointment will be proposed at the forthcoming annual general meeting.

Approval of Annual Report

This report was approved by the Board of Directors on 18th February 2009 and signed on its behalf by:

J.L. Sparkes,
Chairman

18th February 2009

REPORT OF THE AUDITORS

REPORT OF THE AUDITORS TO THE MEMBERS OF AUTISM ANGLIA

We have audited the financial statements of Autism Anglia for the year ended 31st August 2008 on pages 16 to 26. These financial statements have been prepared under the historical cost convention, as modified by the revaluation of certain fixed assets, and the accounting policies set out on page 20.

This report is made solely to the company's members, as a body, in accordance with Section 235 of the Companies Act 1985. Our audit work has been undertaken so that we might state to the company's members those matters, which we are required to state to them in an auditor's report and for no other purpose. To the fullest extent permitted by law, we do not accept or assume responsibility to anyone other than the company and the company's members as a body, for our audit work, for this report, or for the opinions we have formed.

Respective responsibilities of directors and auditors

As described on page 12, the directors (who also act as trustees for the charitable activities of the company) are responsible for the preparation of the financial statements in accordance with applicable law and United Kingdom Accounting Standards. Our responsibility is to audit the financial statements in accordance with relevant legal and regulatory requirements and United Kingdom Auditing Standards.

We report to you our opinion as to whether the financial statements give a true and fair view and are properly prepared in accordance with the Companies Act 1985. We also report to you if, in our opinion, the Directors' Report is not consistent with the financial statements, if the company has not kept proper accounting records, if we have not received all the information and explanations we require for our audit, or if information specified by law regarding directors' remuneration and transactions with the company is not disclosed. We read the Directors' Report and consider the implications for our report if we become aware of any apparent misstatements within it.

Basis of opinion

We conducted our audit in accordance with United Kingdom Auditing Standards issued by the Audit Practices Board. An audit includes examination, on a test basis, of evidence relevant to the amounts and disclosures in the financial statements. It also includes an assessment of the significant estimates and judgements made by the Directors in the preparation of the financial statements, and of whether the accounting policies are appropriate to the company's circumstances, consistently applied and adequately disclosed.

We planned and performed our audit so as to obtain all information and explanations which we consider necessary in order to provide us with sufficient evidence to give reasonable assurance that the financial statements are free from material misstatement, whether caused by fraud or other irregularity or error. In forming our opinion we also evaluated the overall adequacy of the presentation of the information in the financial statements.

Opinion

In our opinion the financial statements give a true and fair view of the state of the company's affairs as at 31st August 2008 and of its incoming resources and application of resources, including its income and expenditure and cash flows for the year then ended and have been properly prepared in accordance with the Companies Act 1985 and the information given in the Directors' Report is consistent with the accounts.

Whittle & Co.

Chartered Accountants
and Registered Auditors

Century House South
North Station Road
Colchester
Essex, CO1 1RE

18th February 2009

STATEMENT OF FINANCIAL ACTIVITIES FOR THE YEAR ENDED 31st AUGUST 2008

(incorporating Income and Expenditure Account)

	Note	Unrestricted funds £'000	Restricted funds £'000	Total 2008 £'000	Total 2007 £'000
Incoming resources					
Charitable activities		6,801	-	6,801	4,876
Voluntary income:					
Donations and gifts		18	10	28	38
Fund raising		13	240	253	352
Interest receivable		5	-	5	-
Total incoming resources	1	6,837	250	7,087	5,266
Resources expended					
Charitable activities		6,324	110	6,434	4,854
Governance costs		10	-	10	7
Fund raising costs		54	-	54	91
Financing costs		307	-	307	322
Total resources expended	1 & 3	6,695	110	6,805	5,274
Net incoming/(outgoing) resources before transfers		142	140	282	(8)
Transfers between funds	9	44	(44)	-	-
Net incoming/(outgoing) resources for the year		186	96	282	(8)
Transfer of assets and liabilities of NACHA and NAS	13	952	3	955	-
Net movement in funds		1,138	99	1,237	(8)
Balances brought forward at 1st September 2007		3,733	129	3,862	3,870
Balances carried forward at 31st August 2008		4,871	228	5,099	3,862

The notes on pages 21 to 26 form part of these accounts

**TOTAL RECOGNISED GAINS AND LOSSES
FOR THE YEAR ENDED 31st AUGUST 2008**

Statement of recognised gains and losses

	2008	2007
	£'000	£'000
Net incoming/(outgoing) resources for the year	282	(8)
Transfer of assets and liabilities from NACHA and NAS	955	-
	<hr/>	<hr/>
Total recognised gains/(losses) for the year	1,237	(8)
	<hr/>	<hr/>

Detailed analyses of the expenditure are provided in the Statement of Financial Activities and Notes 2 and 3 to the accounts.

BALANCE SHEET AS AT 31st AUGUST 2008

		2008		2007	
	Note	£'000	£'000	£'000	£'000
Fixed assets					
Tangible fixed assets	4		9,112		8,986
Current assets					
Debtors	5	985		365	
Cash at bank and in hand		269		63	
		1,254		428	
Creditors:					
Amounts falling due within one year	6				
Bank loans		95		88	
Bank overdraft		-		379	
Other		870		689	
		965		1,156	
Net current assets/(liabilities)					
			289		(728)
Total assets less current liabilities			9,401		8,258
Creditors					
Amounts falling due after more than one year					
Bank loans	7		4,302		4,396
Net assets			5,099		3,862
Funds					
Unrestricted funds:					
General reserves	8		(4,241)		(5,253)
Designated funds					
Fixed assets			6,965		6,839
Fixed assets revaluation reserve			2,147		2,147
			4,871		3,733
Restricted funds	9		228		129
			5,099		3,862

Approved by the Board of Directors
on 18th February 2009 and signed
on its behalf by:

J.L. Sparkes, Chairman

The notes on pages 21 to 26 form part of these accounts

CASHFLOW STATEMENT FOR THE YEAR ENDED 31st AUGUST 2008

		2008		2007	
	Note	£'000	£'000	£'000	£'000
Net cash inflow from operating activities	12		452		166
Fixed assets					
Purchase of tangible fixed assets		(101)		(156)	
Proceeds from sale of tangible fixed assets		3		3	
		(98)		(153)	
Net cash (outflow) from fixed assets			(98)		(153)
Transfer of cash from NACHA and NAS			318		-
			672		13
Decrease in net debt in year			672		13
Net debt at 31st August 2007			(4,800)		(4,813)
Net debt at 31st August 2008			(4,128)		(4,800)
 Analysis of balance of cash/bank loans					
			2008		2007
			£'000		£'000
Cash at Bank and in hand			269		63
Bank overdraft			-		(379)
			269		(316)
Bank loans			(4,397)		(4,484)
Net debt at 31st August 2008			(4,128)		(4,800)

The notes on pages 21 to 26 form part of these accounts

ACCOUNTING POLICIES

The financial statements have been prepared in accordance with the Statement of Recommended Practice "Accounting and Reporting by Charities" issued in March 2005 ("SORP"), the Charities Act 1993, the Companies Act 1985 and applicable accounting standards. The particular policies adopted in the preparation of the financial statements are set out below.

1. Accounting convention

These financial statements are drawn up on the historical cost accounting basis except for certain freehold properties, which are included at revalued amounts.

2. Fees

Income from the provision of services under contract is recognised in the Statement of Financial Activities to the extent that the services have been provided. Where such income is invoiced in advance it is included under creditors as contract fees received in advance.

3. Resources expended

All expenditure is accounted for on an accruals basis and has been classified under headings that aggregate costs related to that category. This includes the direct cost of the charitable activities together with support costs that enable the activities to be undertaken. Where costs such as head office cannot be directly attributed to particular headings they have been allocated to activities on an appropriate bases.

4. Costs of fundraising

The costs of fundraising include the costs of generating voluntary income.

5. Governance

Governance costs represent expenditure incurred in the compliance with statutory requirements.

6. Head Office costs

The apportionment of Head Office costs is based on the number of people based in each activity.

7. Tangible fixed assets and depreciation

Tangible fixed assets costing more than £1,000 are capitalised and included at cost including any incidental expenses of acquisition. Freehold land and buildings are included at revaluation (on an open market basis) with the exception of the New Doucecroft School which is regarded as a specialised asset and included at cost. Depreciation is provided on freehold property at the rate of 2.5% per annum.

Depreciation is provided on leasehold improvements over the period of the lease.

Depreciation is provided to write off the costs of other tangible assets by equal instalments over their useful

lives at the following rates.

Furniture, fixtures and equipment:	15%
Computer equipment	25%
Motor vehicles	20%

8. Pension scheme

The company operates and contributes to a defined contribution pension scheme which is available to all staff after a minimum of three months service.

9. Funds accounting

The charity maintains various types of funds as follows:

Unrestricted general funds - these are funds which can be used in accordance with the charitable objects at the discretion of the trustees and which have not been designated for other purposes.

Designated funds - these are funds set aside by the trustees out of unrestricted general funds for particular purposes or projects.

Restricted funds - these are funds that can only be used for particular restricted purposes within the objects of the charity. Restrictions arise when specified by the donor or when funds are raised for particular restricted purposes.

Value added tax

The company's activities are classified as exempt for the purposes of value added tax, and the company is unable to reclaim the value added tax which it suffers on its expenses. Expenditure in these financial statements is therefore shown inclusive of value added tax.

NOTES TO THE ACCOUNTS

1. Incoming resources and resources expended from operating activities in respect of unrestricted funds

	School Services £'000	Adult Services £'000	Property Services £'000	Other £'000	Total 2008 £'000	Total 2007 £'000
Incoming resources						
Fees receivable	2,816	3,985	-	-	6,801	4,876
Donations and gifts	-	-	-	18	18	22
Fund raising	-	-	-	13	13	12
Investment income	-	-	-	5	5	-
Total incoming resources	2,816	3,985	-	36	6,837	4,910
Resources expended						
Direct charitable expenditure	2,859	3,604	(145)	6	6,324	4,710
Governance costs	-	-	-	10	10	7
Fund raising costs	-	-	-	54	54	91
Financing costs	-	-	-	307	307	322
Total outgoing resources	2,859	3,604	(145)	377	6,695	5,130
Net (outgoing)/incoming resources for the year	(43)	381	145	(341)	142	(220)

2. Staff costs and numbers

	Unrestricted £'000	Restricted £'000	2008 Total £'000	2007 Total £'000
Salaries and wages	4,088	46	4,134	2,972
Social security costs	336	4	340	241
Pension costs	140	2	142	103
	4,564	52	4,616	3,316

	2008		2007	
	Full Time No.	Part Time No.	Full Time No.	Part Time No.
The average number of employees during the year				
School services	78	14	72	18
Adult services	95	45	61	31
Management and administration and others	12	2	12	1

Trustees are not remunerated. The Society has incurred expenditure of £5,000 in respect of Indemnity Insurance for the Trustees.

NOTES TO THE ACCOUNTS

3. Analysis of resources expended in respect of unrestricted funds.

	Staff Costs £'000	Running Costs £'000	Depreciation £'000	2008 Total £'000	2007 Total £'000
a. Direct charitable expenditure					
School services	1,784	1,009	66	2,859	2,637
Adult services	2,732	845	27	3,604	2,220
Property services	2	(349)	202	(145)	(166)
Family Support Officer	4	2	-	6	19
	4,522	1,507	295	6,324	4,710
b. Fund raising costs					
	42	12	-	54	91
c. Running costs					
	Premises £'000	Other costs £'000	Agency staff £'000	2008 £'000	2007 £'000
School services	421	308	280	1,009	1,010
Adult services	345	457	43	845	519
Family Support Officer	-	2	-	2	15
Property services	(354)	5	-	(349)	(369)
Fund raising costs	-	12	-	12	63
	412	784	323	1,519	1,238
d. Depreciation					
	School Services £'000	Adult Services £'000	Property Services £'000	2008 £'000	2007 £'000
Freehold property	-	-	202	202	200
Leasehold Improvements	2	3	-	5	4
Furniture, fixtures and fittings	40	7	-	47	44
Motor vehicles	24	17	-	41	39
	66	27	202	295	287

	2008 £'000	2007 £'000
Auditors' remuneration	5	4
Amounts payable to auditors in respect of non-audit services	18	-

The directors received neither remuneration nor expenses

NOTES TO THE ACCOUNTS

4. Tangible fixed assets

	Freehold land and buildings £'000	Leasehold Improve- ments £'000	Furniture fixtures & equipment £'000	Motor vehicles £'000	Total £'000
Cost or valuation					
At 1st September 2007	9,089	77	231	266	9,663
Additions at cost	12	-	7	82	101
Disposals	-	-	-	(49)	(49)
Transferred from NACHA and NAS	275	64	21	22	382
At 31st August 2008	9,376	141	259	321	10,097
Accumulated depreciation					
At 1st September 2007	340	60	119	158	677
Charge for year	202	5	46	42	295
Disposals	-	-	-	(46)	(46)
Transferred from NACHA and NAS	-	23	14	22	59
At 31st August 2008	542	88	179	176	985
Net book values					
At 31st August 2008	8,834	53	80	145	9,112
At 31st August 2007	8,749	17	112	108	8,986

Freehold land and buildings includes the new Doucecroft School at cost of £6,659,000 (2007: £6,593,000) which has been classified as a specialised asset and not subject to revaluation. The freehold properties transferred from Norfolk Autistic Society were revalued at 29th August 2008 and the other freehold properties were revalued at 31st August 2006, on an open market basis by Fenn Wright, Chartered Surveyors.

	2008 £'000	2007 £'000
Comparable historical cost and depreciation for the land and buildings included at valuation:		
Cost	8,520	8,042
Accumulated depreciation	930	754

The fixed assets are used for direct charitable purposes.

NOTES TO THE ACCOUNTS

5. Debtors

	2008	2007
	£'000	£'000
Amounts due in respect of services	395	268
Prepayments	137	85
Other debtors	453	12
	985	365

Included in other debtors are:

- (a) £56,000(2007: nil) representing an amount held by Broadlands Housing Association for use in the future to cover repairs to the premises occupied by Autism Anglia.
- (b) £320,000 (2007: nil) loan to BREAK (Charity no 286650) which was transferred from Norfolk Autistic Society. The loan is interest free and is repayable upon twelve months notice. Repayment prior to 2012 would be at a lower principal amount.

6. Creditors: Amounts falling due within one year

	2008	2007
	£'000	£'000
Bank loans (secured)	95	88
Bank overdraft (secured)	-	379
	95	467
Other		
Contract services fees received in advance	81	176
Accruals	256	237
Other creditors	226	126
Clients balances	188	71
Payroll tax and social security	119	79
	870	689
	965	1,156

Clients balances are represented by monies held as part of cash at bank.

7. Creditors: Amounts falling due after more than one year

	2008	2007
	£'000	£'000
Bank loan (secured)	4,302	4,396
Repayable by instalments		
After one and within two years	96	95
After two and within five years	344	735
After five years	3,862	3,566
	4,302	4,396

The bank loans and overdraft are secured on all of the assets of the company and represent 46% (2007: 55%) of the value of those assets. The bank loans are repayable by monthly instalments until 2024.

NOTES TO THE ACCOUNTS

8. Unrestricted funds

	General reserves £'000	Designated fixed assets £'000	Total £'000
Balance at 1st September 2007	(5,253)	8,986	3,733
Net incoming resources for the year	186	-	186
Transfer of net assets of NACHA and NAS	952	-	952
Transfers between funds	(126)	126	-
Balance at 31st August 2008	(4,241)	9,112	4,871

The designated fixed assets fund represents the net book value of tangible fixed assets. Each year an amount is transferred to or from the fund representing the movement in the net book value of fixed assets in the year.

9. Restricted funds

The income funds of the Society include restricted funds comprising balances of donations and grants held on trusts to be applied for specific purposes.

	School Services £'000	Adult Services £'000	Family Support £'000	Total £'000
Balance at 1st September 2007	42	25	62	129
Incoming voluntary income - Big Lottery Fund	6	-	-	6
Incoming voluntary income - other	27	129	89	245
Transfer of net assets from NACHA	-	3	-	3
Transfer to unrestricted funds	(32)	(12)	-	(44)
Outgoings	(16)	(13)	(82)	(111)
Balance at 31st August 2008	27	132	69	228

10. Financial Commitments

At the year end the company had annual commitments under non-cancellable operating leases as follows:

	Land and buildings		Other	
	2008 £'000	2007 £'000	2008 £'000	2007 £'000
Expiry date:				
Within one year	-	-	-	5
Between two and five years	76	62	5	4
In over five years	12	-	4	-

NOTES TO THE ACCOUNTS

11. Capital Commitments

	2008 £'000	2007 £'000
Authorised but not contracted for	425	-

12. Net cash inflow from operating activities

	2008 £'000	2007 £'000
Net incoming/(outgoing) resources	282	(8)
Depreciation for the year	296	288
(Decrease)/increase in creditors	(22)	94
(Increase) in debtors	(104)	(208)
	452	166

13. Transfer of Norfolk Autistic Community Housing Association Limited (NACHA) and Norfolk Autistic Society (NAS) to Autism Anglia

On 29th February 2008 all assets and liabilities of NACHA, a company registered under the Industrial and Provident Societies Act 1965 to 2002 with number IP23531R, were transferred at their book value. On 29th August 2008 all assets and liabilities of NAS, a company limited by guarantee, number 42008326, charity number 1089382, were transferred at their book value.

	NACHA £'000	NAS £'000	Total £'000
Tangible fixed assets	48	275	323
Debtors	140	376	516
Cash at bank and in hand	315	3	318
Creditors	(159)	(9)	(168)
	344	645	989
Less: Legal and due diligence expenses relating to transfer			34
			955

14. Investments in subsidiaries

The charity has an investment of £1 in each of the following dormant subsidiaries all registered in England.

Autism Essex Limited
Autism East Limited
Autism Norfolk Limited
Autism Suffolk Limited

FIVE-YEAR FINANCIAL SUMMARY

Statement of financial activities

	2008 £'000	2007 £'000	2006 £'000	2005 £'000	2004 £'000
Incoming resources					
Charitable activities	6,801	4,876	4,109	3,554	3,291
Voluntary income	281	390	389	458	152
Investment income	5	-	-	-	29
Total incoming resources	<u>7,087</u>	<u>5,266</u>	<u>4,498</u>	<u>4,012</u>	<u>3,472</u>
Resources expended					
Charitable activities	6,434	4,854	4,464	3,440	3,062
Governance costs	10	7	9	9	9
Fundraising costs	54	91	83	83	58
New school project	-	-	-	151	125
Financing costs	307	322	332	259	53
Total resources expended	<u>6,805</u>	<u>5,274</u>	<u>4,888</u>	<u>3,942</u>	<u>3,307</u>
Net incoming/(outgoing) resources	282	(8)	(390)	70	165
Transfer of net assets of NACHA and NAS *	955	-	-	-	-
Gain on revaluation of freehold properties/investments	-	-	467	-	5
Net movement in funds	<u>1,237</u>	<u>(8)</u>	<u>77</u>	<u>70</u>	<u>170</u>

Summarised cash flow statement

Net cash inflow from operating activities	452	166	34	480	400
Purchase of tangible fixed assets	(101)	(156)	(155)	(2,916)	(3,909)
Proceeds from sale of tangible fixed sets/investments	3	3	565	4	92
Net cash (outflow)/inflow from fixed assets	(98)	(153)	410	(2,912)	(3,817)
Transfer of cash from NACHA and NAS *	318	-	-	-	-
Net decrease/(increase) in net debt in year	<u>672</u>	<u>13</u>	<u>444</u>	<u>(2,432)</u>	<u>(3,417)</u>
Net debt	<u>4,128</u>	<u>4,800</u>	<u>4,813</u>	<u>5,257</u>	<u>2,825</u>

Summarised balance sheets

Tangible fixed assets	9,112	8,986	9,122	9,536	6,747
Current assets:					
Debtors	985	365	156	184	179
Cash at bank and in hand	269	63	57	57	409
	<u>1,254</u>	<u>428</u>	<u>213</u>	<u>241</u>	<u>588</u>
Total assets	<u>10,366</u>	<u>9,414</u>	<u>9,335</u>	<u>9,777</u>	<u>7,335</u>
Creditors:					
Amounts falling due within one year					
Bank loans and overdraft	95	467	2,126	988	58
Other	870	689	595	670	378
Net current liabilities	<u>965</u>	<u>1,156</u>	<u>2,721</u>	<u>1,658</u>	<u>436</u>
Total assets less current liabilities	<u>9,401</u>	<u>8,258</u>	<u>6,614</u>	<u>8,119</u>	<u>6,899</u>
Creditors:					
Amounts falling due after more than one year					
Bank loans	4,302	4,396	2,744	4,326	3,176
Net assets	<u>5,099</u>	<u>3,862</u>	<u>3,870</u>	<u>3,793</u>	<u>3,723</u>

* Norfolk Autistic Community Housing Association and the Norfolk Autistic Society

THANKS AND ACKNOWLEDGEMENTS

The directors would like to thank all the charitable trusts and foundations, companies, clubs, groups and individuals who have helped in any way to raise this amount. We would particularly like to acknowledge the following for their support either through grants, pledges, sponsorship, donations or gifts in kind.

ABC Charitable Trust	Inner Wheel Club of South Woodham Ferrers
ACE European Group	Interconnector UK
Augustine Courtauld Trust	Jack Petchey Foundation
Braintree & Rivers Trust Rotary Club	Kingston Unity The Friendly Charity
Burstead Golf Club	Man Diesel Ltd
Children In Need	Marconi (Chelmsford) & Associates Employees Charities Trust
Colchester & Tendring Community Trust	Marsh Christian Trust
Colchester Business & Professional Lunch Club	Mercers Charitable Trust
Colchester Catalyst Charity	Mersea Island Lodge
Colchester Golf Club, Braiswick	Norfolk Community Foundation- Make it Happen
Colchester Round Table 367	North East Essex Primary Care Trust
Co-op Dividend Fund	Rotary Club of Colchester Trinity
Coutts Charitable Trust	Schools, Children & Families, Essex County Council
D & T Sporting Trophies Ltd	Scotiabank Europe Plc
Dengie Amateur Music Group	SGR FM, Operation Santa Claus
Essex Community Foundation - High Sheriff's Award	Southend on Sea Borough Council
Essex Community Foundation - Millennium Fund	Tally Ho Bridge Club
Essex Community Foundation - Sport Relief Fund	Tearfund & Mission Group of All Saints Church
Essex County Council (Schools, Children & Families)	Tendring CVS
Essex County Football Association Limited	The Abbey Charitable Trust
Essex Social Care Grant	The Church of St Peter & St Paul, Little Horkesley
Essex Youth Trust	The Elizabeth & Prince Zaiger Trust
F.P Guiver & Sons Ltd	The Hospital Saturday Fund
Fowler Smith & Jones Charitable Trust	The Rank Foundation
GoodyBurrett LLP	The Red Lion Pub, Wakering High Street
HBOS Foundation	The Three Guineas Trust
Hiscox Insurance	

We also remain extremely grateful to our collection volunteers and all the people that have taken part in our events or raised money on our behalf.

Autism Anglia

Registered Charity No: 1063717
Registered Company No: 3407778



Head Office

(Registered Office)
Century House
Riverside Office Centre
North Station Road
Colchester
Essex CO1 1RE
01206 577678